

Fulton Street Transit Center Update for Community Board 1

December 13, 2004

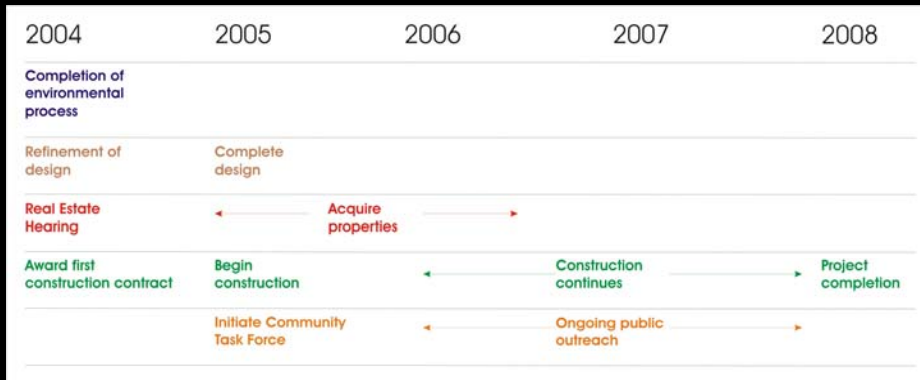


 Metropolitan Transportation Authority

Since We Last Met

- Planning process completed
 - Final Environmental Impact Statement issued Sept 29
 - Record of Decision issued by FTA on November 22
- Design continuing

What's Next



Final Design

- Design refinements
- Carry out Programmatic Agreement on historic preservation
- Prepare construction drawings
- Finalize construction methods

Property Acquisition

- Real Estate Public Hearing scheduled for:
December 16
6 PM
2 Broadway – 20th Floor

- Comments solicited on proposed acquisition of temporary and permanent interests in properties in connection with FSTC project



Property Acquisition Process

- Governed by:
 - Uniform Relocation Assistance and Real Property Acquisition Policies Act
 - NY State Eminent Domain Procedure Law
- Laws and regulations ensure that people whose real property is acquired, or who move as a result of projects receiving Federal funds, will be treated fairly and equitably and will receive assistance in moving from the property they occupy

Begin Construction

- Begin construction in January of two elements:
 - 23 line station improvements
 - 45 line new southern entrances (Cortlandt St/Maiden Lane)
- Construction guided by environmental management efforts



Construction Environmental Management

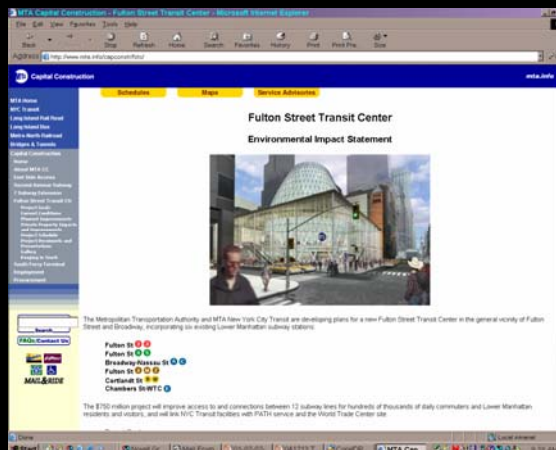
- Environmental Performance Commitments reduce air, noise, and traffic impacts:
 - Air: Ultra-low sulfur diesel, best available retrofit technology, etc. to reduce Particulate Matter (PM) production
 - Noise: Construction coordination to reduce combined impacts
 - Traffic: Agreement on truck routes to ease congestion
 - Economic: Maintenance and Protection of Traffic (MPT) plans to maintain access to local businesses

Next Steps

- Construction Coordination Task Force to meet early next year
- Future updates to CB 1

More Information

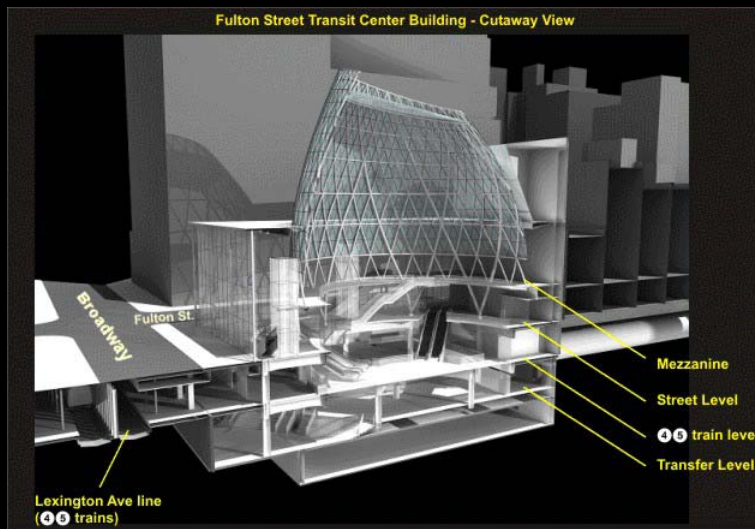
- MTA website: www.mta.info
- Select “Capital Construction”, then “Fulton Street Transit Center”



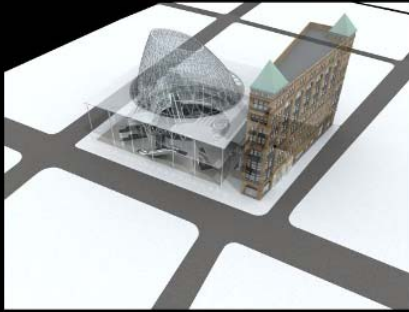
Gallery



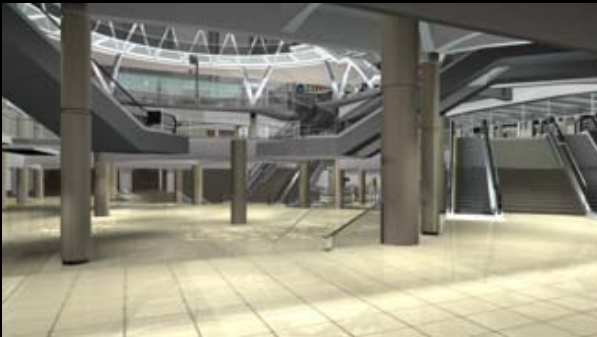
Gallery



Gallery



Gallery



Gallery



Gallery



Gallery



Design Progression



Current Condition



Original Rendering



New Rendering