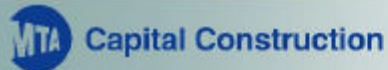


Design Discussion

Fulton St Transit Center



AIA, May 26th, 2004



Project Background



Project Background



Project Goals

Lower Manhattan Transit Needs

Primary Objectives

- Overcome longstanding obstacles to better access
- Create Lower Manhattan Transit Hub
- Support economic recovery
- Challenge: "Improve the trip to Lower Manhattan and do it in my commuting lifetime."



Current Conditions: Entry Points

Primary entry to the downtown subway complex:



- Poorly marked
- Obscured by a confusing array of storefronts

MTA Capital Construction Current Conditions: Access & Transfer

- Narrow entrances inhibit quick access



- No accessibility for disabled



- Inadequate Levels of Service during peak hours

MTA Capital Construction Current Conditions: Wayfinding

Passengers maneuver through a complicated series of ramps, stairs and passageways to:



- Access their trains
- Transfer from one subway line to another
- Exit the station.

MTA Capital Construction Current Conditions: Connectivity

Limited entry points to the Lexington Ave line results in:

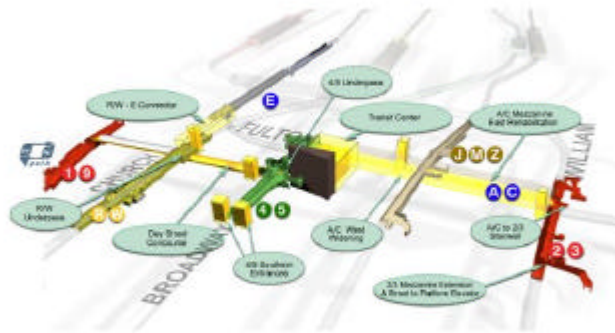


- Uneven passenger distribution
- Platform crowding
- Train delays

Subway access from key downtown locations is hampered by narrow, crowded streets and heavy vehicular traffic.



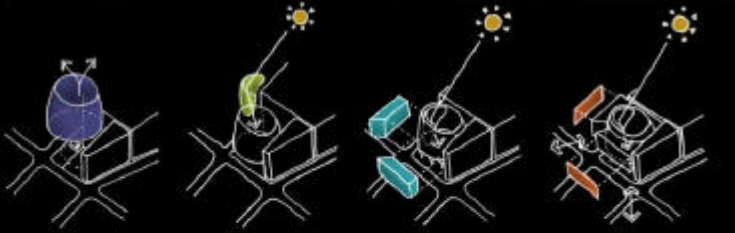
Existing stations and conduits lack direct intermodal connectivity.



- MTA/NYCT is at a turning point in its approach to architecture
- NYC is at a turning point in architecture--more world-class designs
- Aspirations for future projects
- Evolution of transit architecture
- Great transit architecture
- Consultants helping attain great architecture



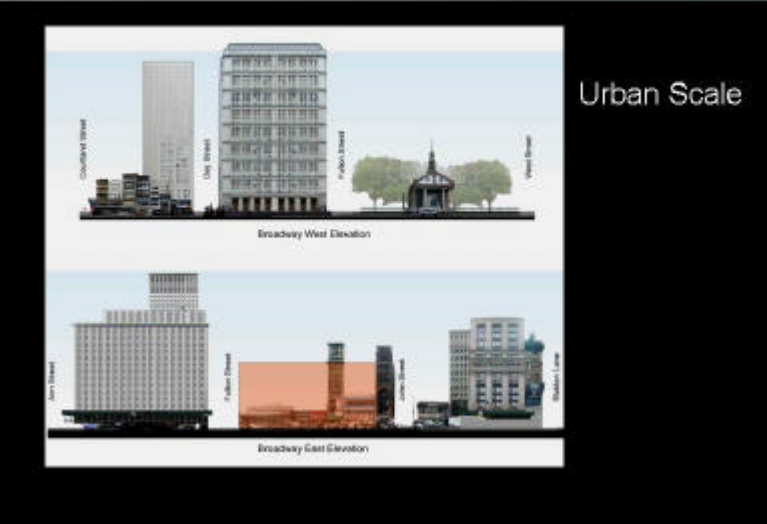
Design Goals



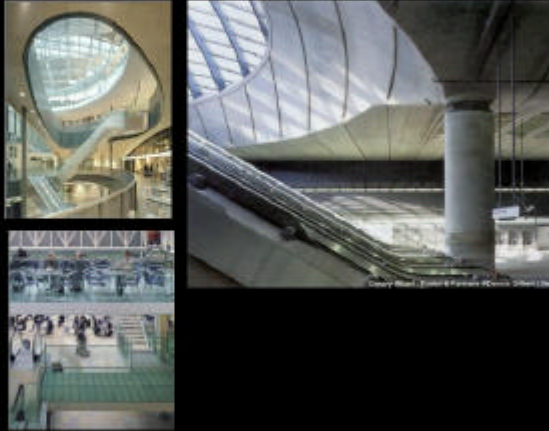
- Identity
- Urban & Historic Context
- Light
- Retail/Amenity
- Civic Space

Identity





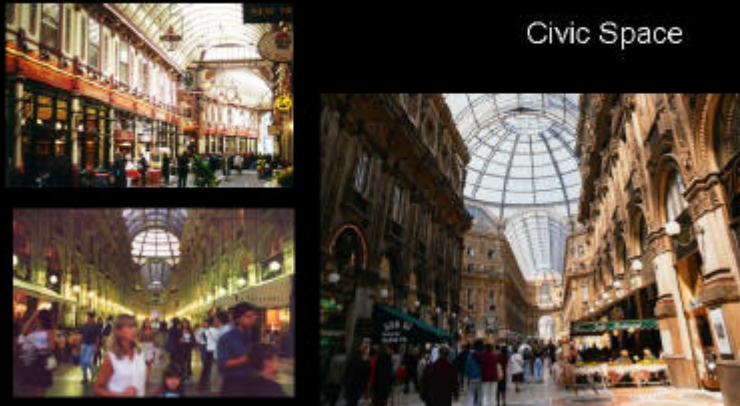
Light



Retail



Civic Space

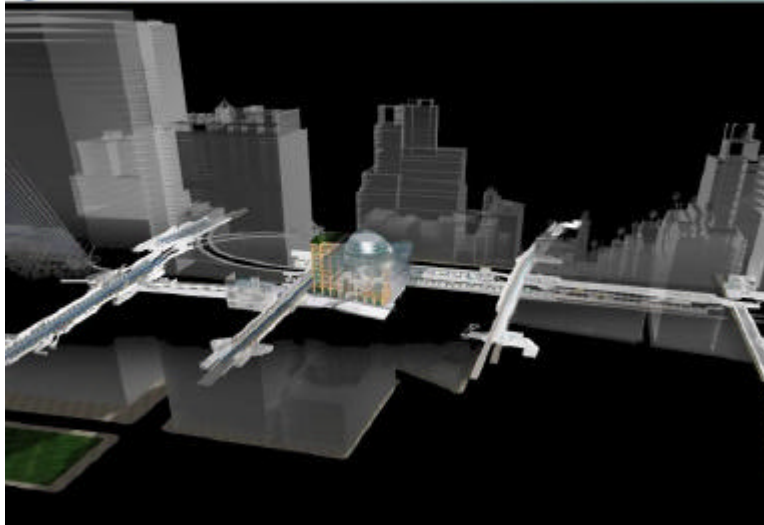


Galleria, Milan

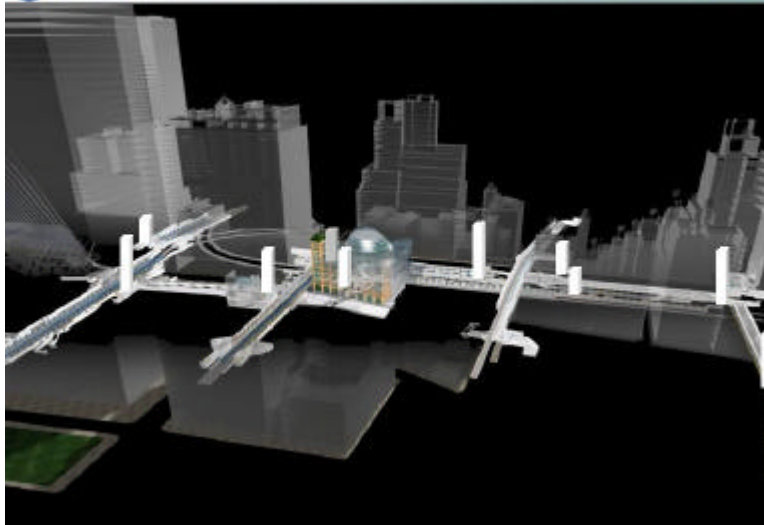
Design Concept

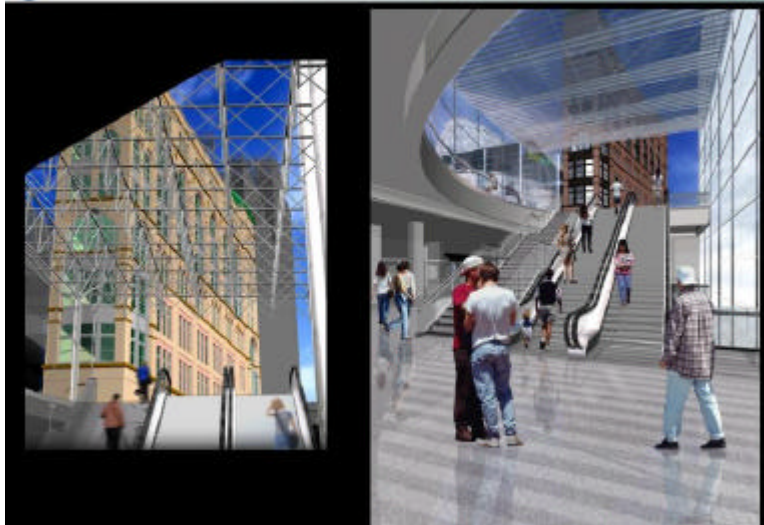


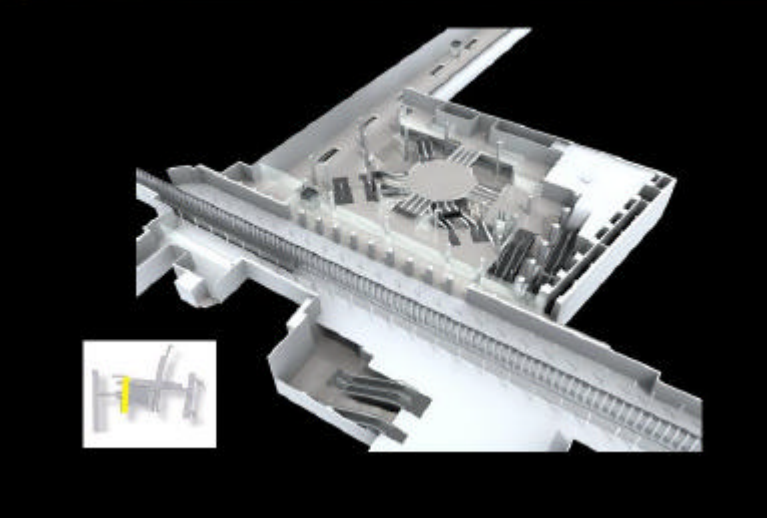
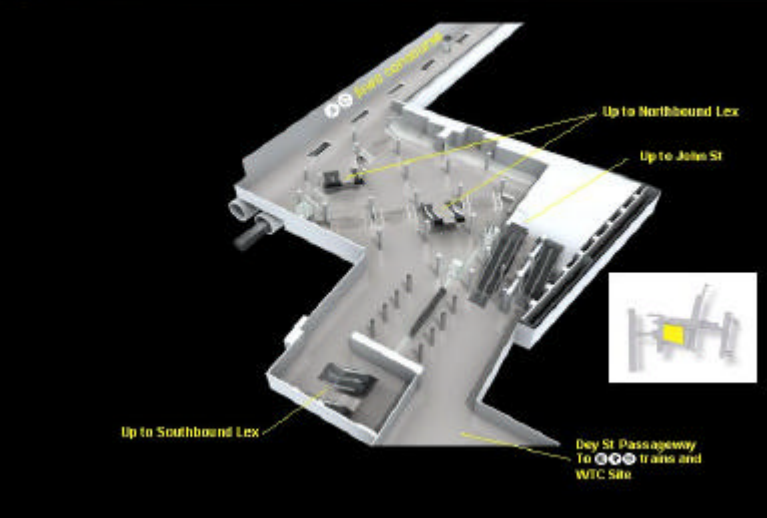
Transit Center complex

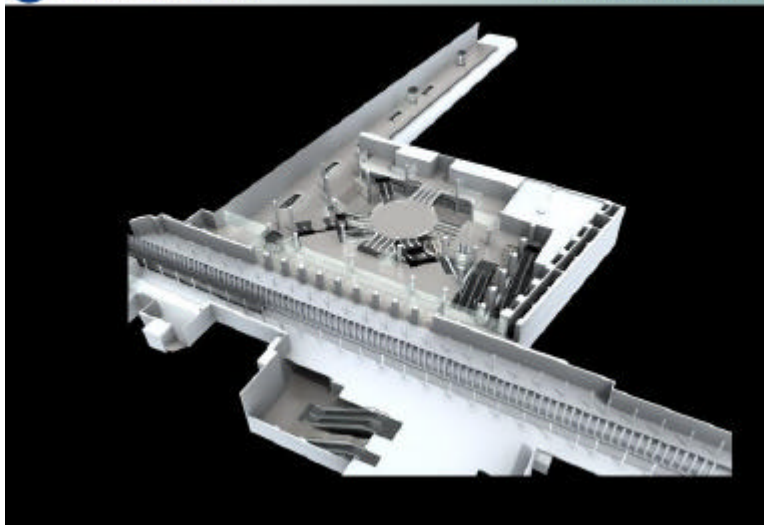


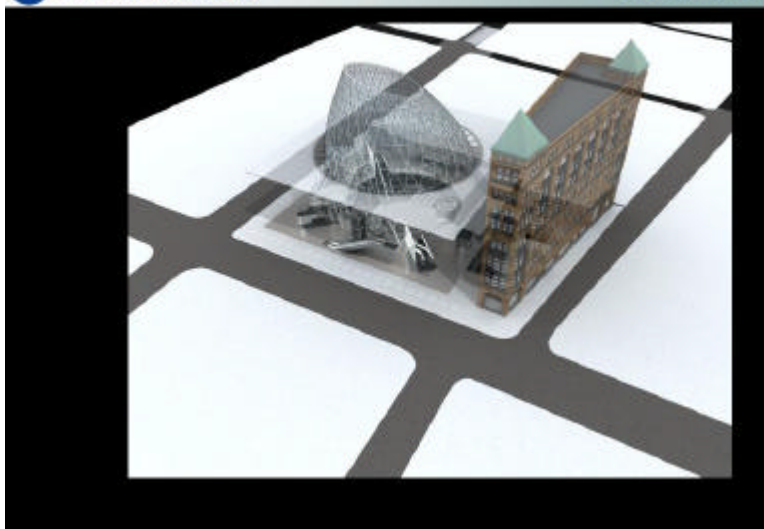
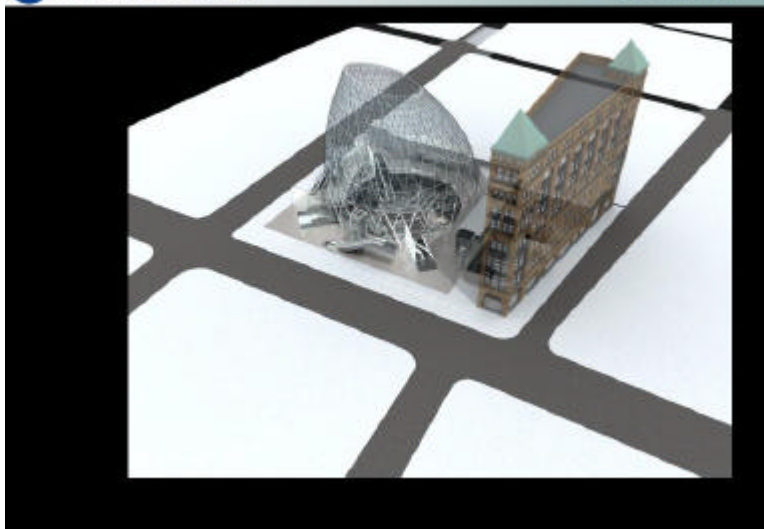
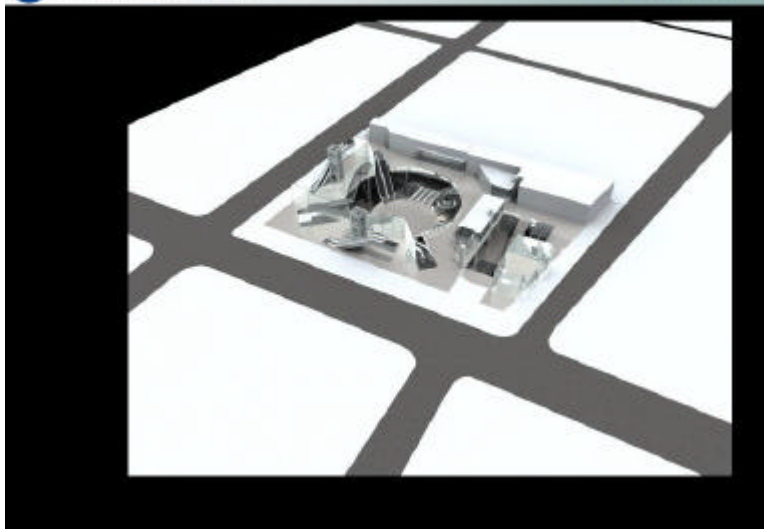
ADA Access

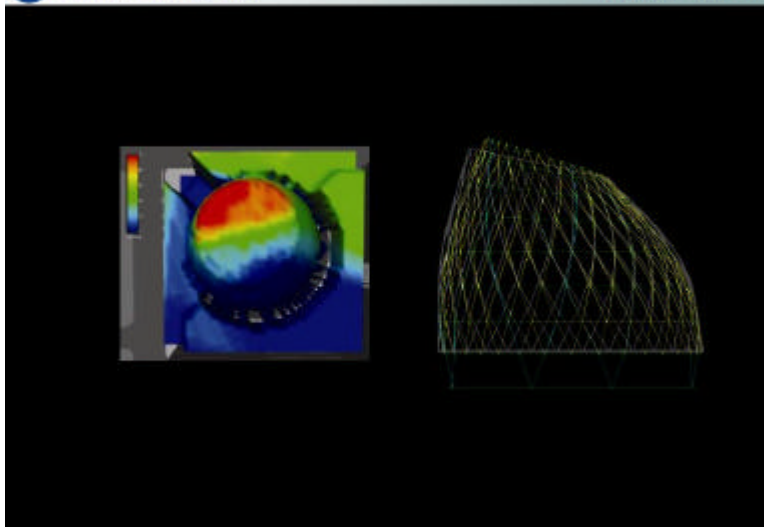
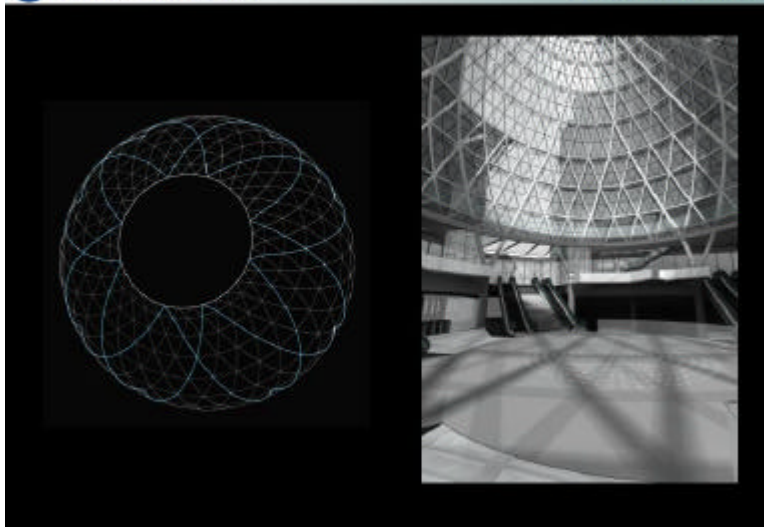
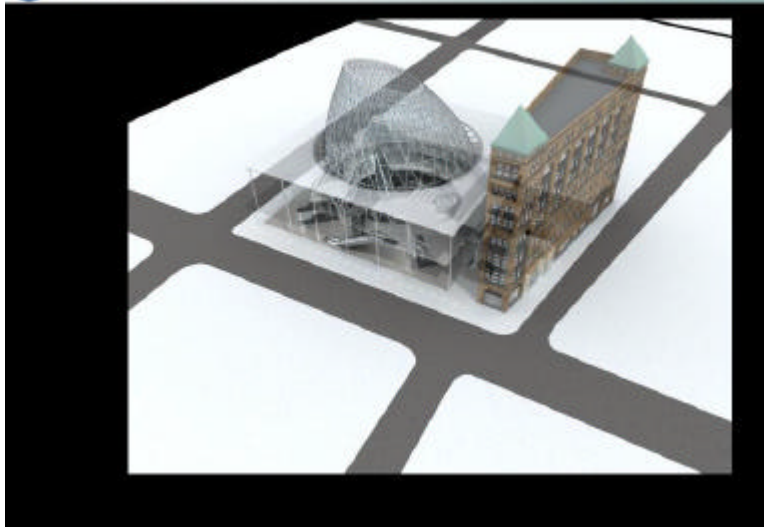


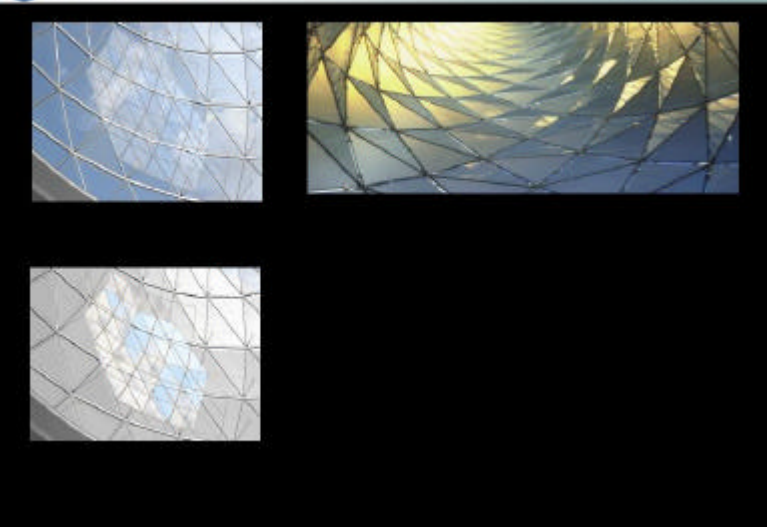
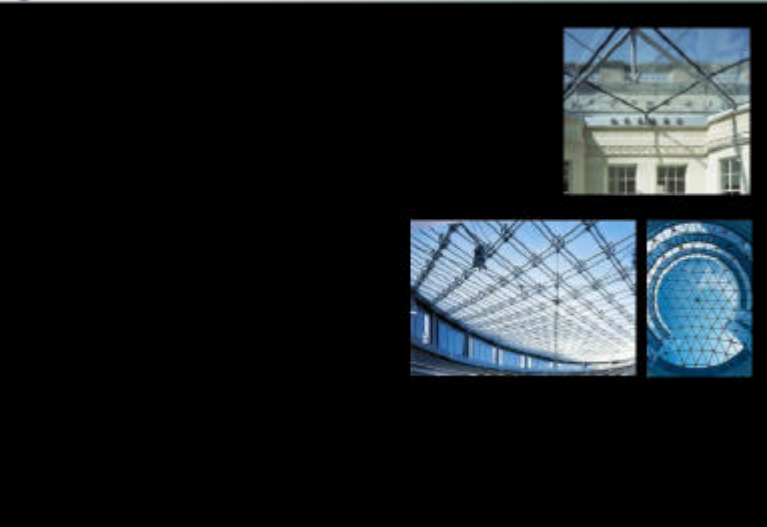
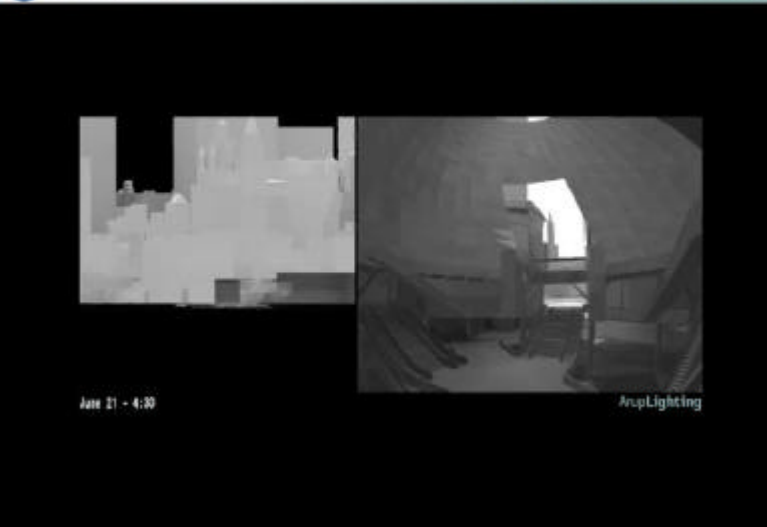


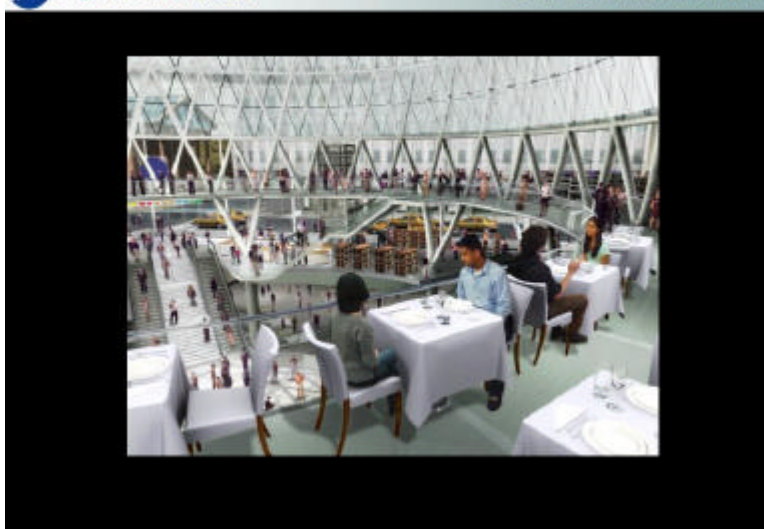
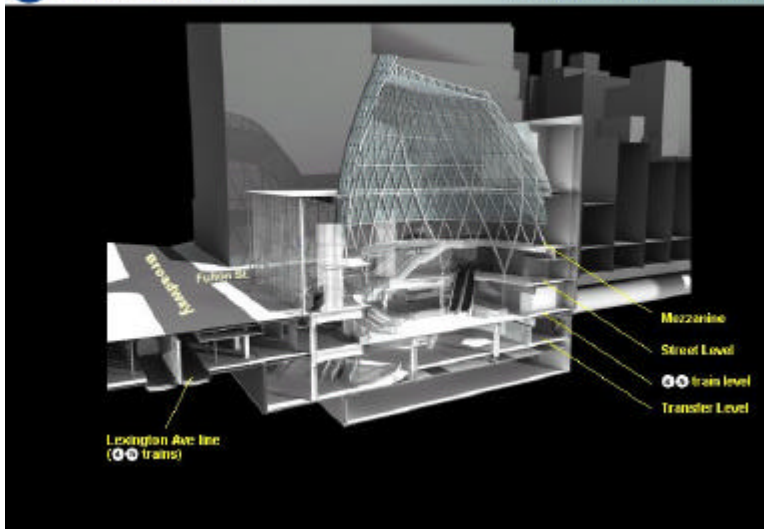














- Design concept on MTA website: www.mta.info
- DEIS hearing – June 8th, 4:30 p.m. at 2 Broadway, 20th Floor.

Visualization

MTA Metropolitan Transportation Authority
 New York City Transit
 Capital Construction

Project Team

ARUP

GRIMSHAW
 Lee Harris Pomeroy Architects
 Daniel Frankfurt
 Systra Engineering
 Vollmer Associates
 GZA Environmental

A.G Consulting Engineering
 B-A Engineering
 Barbara Thayer
 Bureau Mijksenaar USA
 Cooley Monato Studio
 Fisher Marantz Stone
 Joan H Gelsmar, PhD
 John A Van Deusen & Associates
 Jones Lang LaSalle
 Judith Heintz Landscape Architecture
 Louis Nelson Associates
 Macon Pace

MCS S
 Mueser Rutledge
 Naik-Prasad
 Page Ayres Cowley Architects
 V.J. Associates
 Yu & Associates
 Zetlin Strategic Communications
 SWA
 Carolyn J. Law
 James Carpenter Design Associates

