

Getting to the *World Trade Center*

- Ferries to/from:
- Port Imperial (Weehawken)
 - Hoboken
 - Jersey City (Colgate)
 - Liberty State Park
 - Belford
 - NY Water Taxi (various stops)

Key

- Subway lines
- Part-time line extension
- Local bus routes
- Manhattan express bus route (green)
- Downtown Connection (free bus service)
- Pedestrian only zones
- Closed subway station

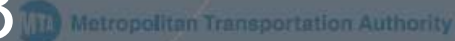
- Ferries to/from:
- Port Imperial (Weehawken)
 - Hoboken
 - Liberty Harbor
 - Port Liberty
 - Belford
 - Atlantic Highlands (Seastreak)
 - Highlands (Seastreak)
 - NY Water Taxi (various stops)

A Briefing for *New York/New Visions*

WEEKEND AND LATE NIGHT SERVICE SUBJECT TO CHANGE

During the reconstruction of South Ferry and Fulton Street stations, weekend and late night service is subject to change. For the latest service information, call the NYCT Travel Information Center at 718-330-1234, check station posters, or visit the MTA website at www.mta.info.

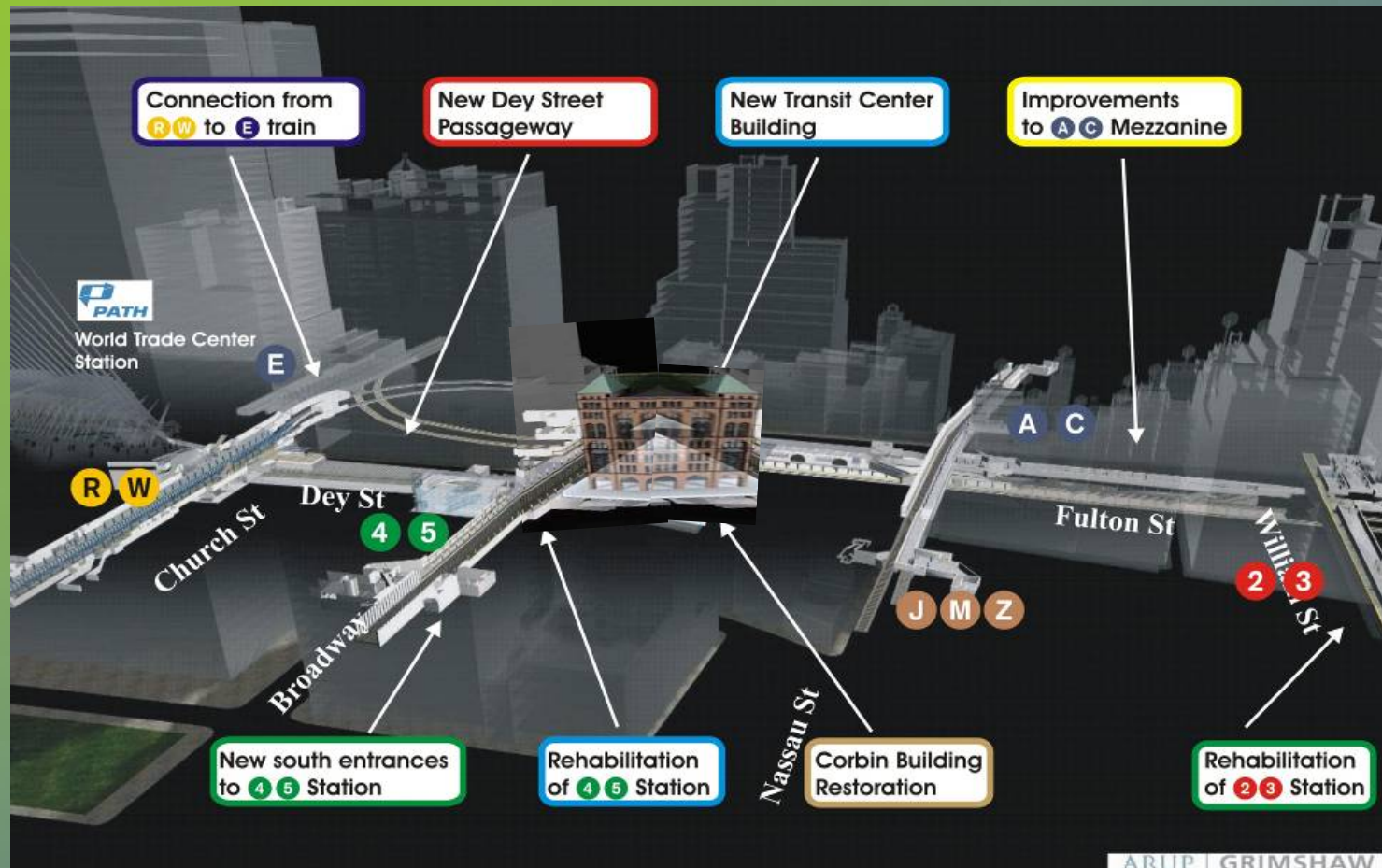
May 22, 2008



Regional ferry service is not provided by the MTA, but by a variety of public and private carriers.

Fulton Street Transit Center – Project Status

- All mobility improvements are funded
- “Headhouse” design review does not affect design/construction schedule



Fulton Street Transit Center – Project Status

- Some components already open, such as ④ ⑤ Broadway street stairs



Fulton Street Transit Center – Project Status

Current progress on
Dey St Concourse (right)
and 4 5 underpass (below)



Fulton Street Transit Center – Mobility Improvements Dey Street Passageway

- 29' wide and 15' high
- Brightly lit passenger concourse
- Provides unpaid link between WTC and FSTC Building



Fulton Street Transit Center – Mobility Improvements

New John Street Access

Free access for PATH, WTC, WFC to east of Broadway



Fulton Street Transit Center – Mobility Improvements

New central circulation improvements

Links between **A** **C** concourse, **4** **5** Platforms, Dey St Passageway to WTC

Open plan design facilitates wayfinding, increases passenger capacity



Fulton Street Transit Center – Mobility Improvements

New station concourses

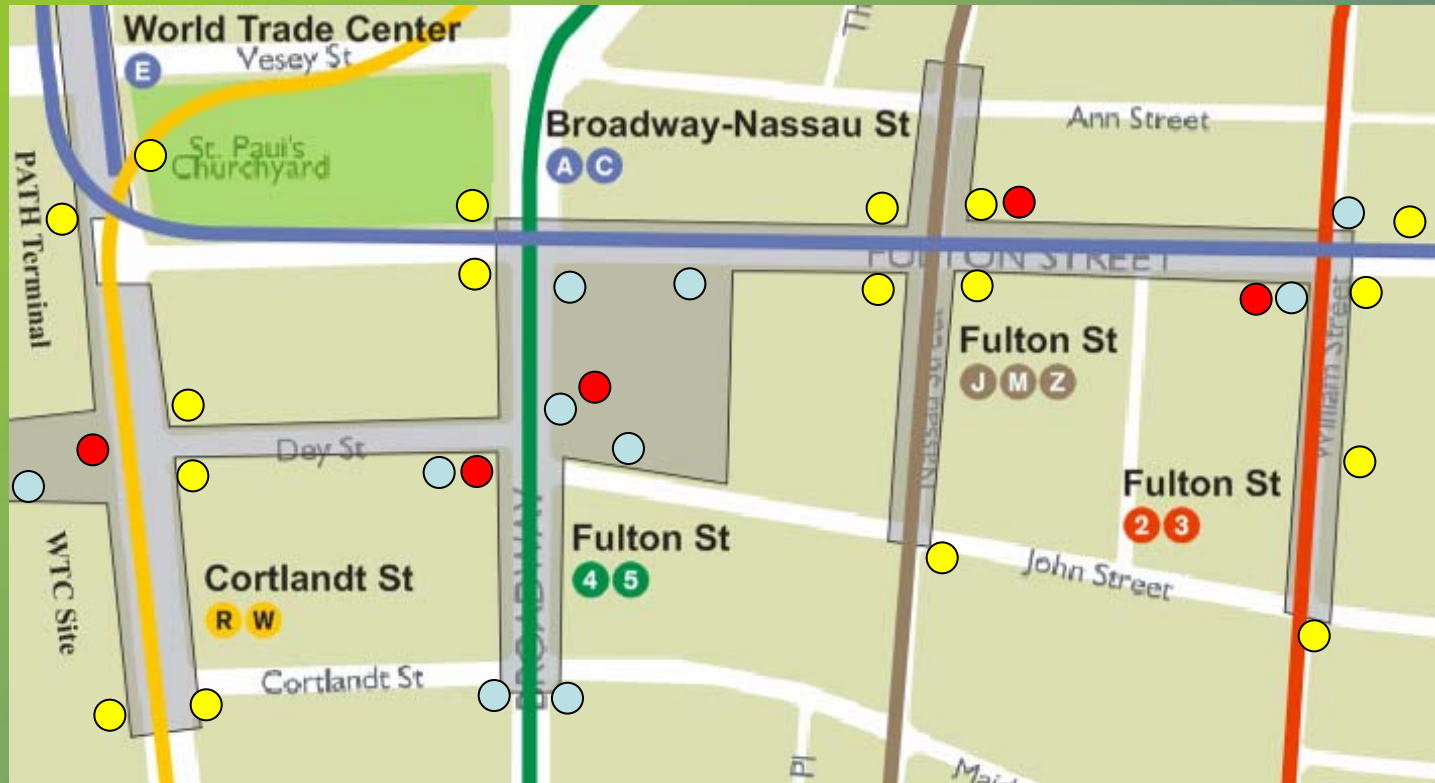
New design provides unobstructed pedestrian flow / eliminates confusing switchback ramps



Fulton Street Transit Center – Mobility Improvements

New Pedestrian Access Points

New station design provides ADA accessibility and new entry points to subway



- Existing Entrances
- New Access
- New Elevator Access

Fulton Street Transit Center

Level of Service Analysis

Subway Station Elements Operating at LOS D or Worse in Peak Periods

Pre 9/11: 23 station elements (Table 6-26)

Opening Year Analysis

- *No-Action: 21 elements (table 6-36)*
- *FEIS Concept: 8 elements (table 6-42)*
- *9/05 PE Project: 8 elements (table 6-42 rev)*

2025 Horizon Year Analysis

- *No-Action: 26 elements (table 6-44)*
- *FEIS Concept: 33 elements (table 6-50)*
- *9/05 PE Project: 13 elements (table 6-50 rev)*

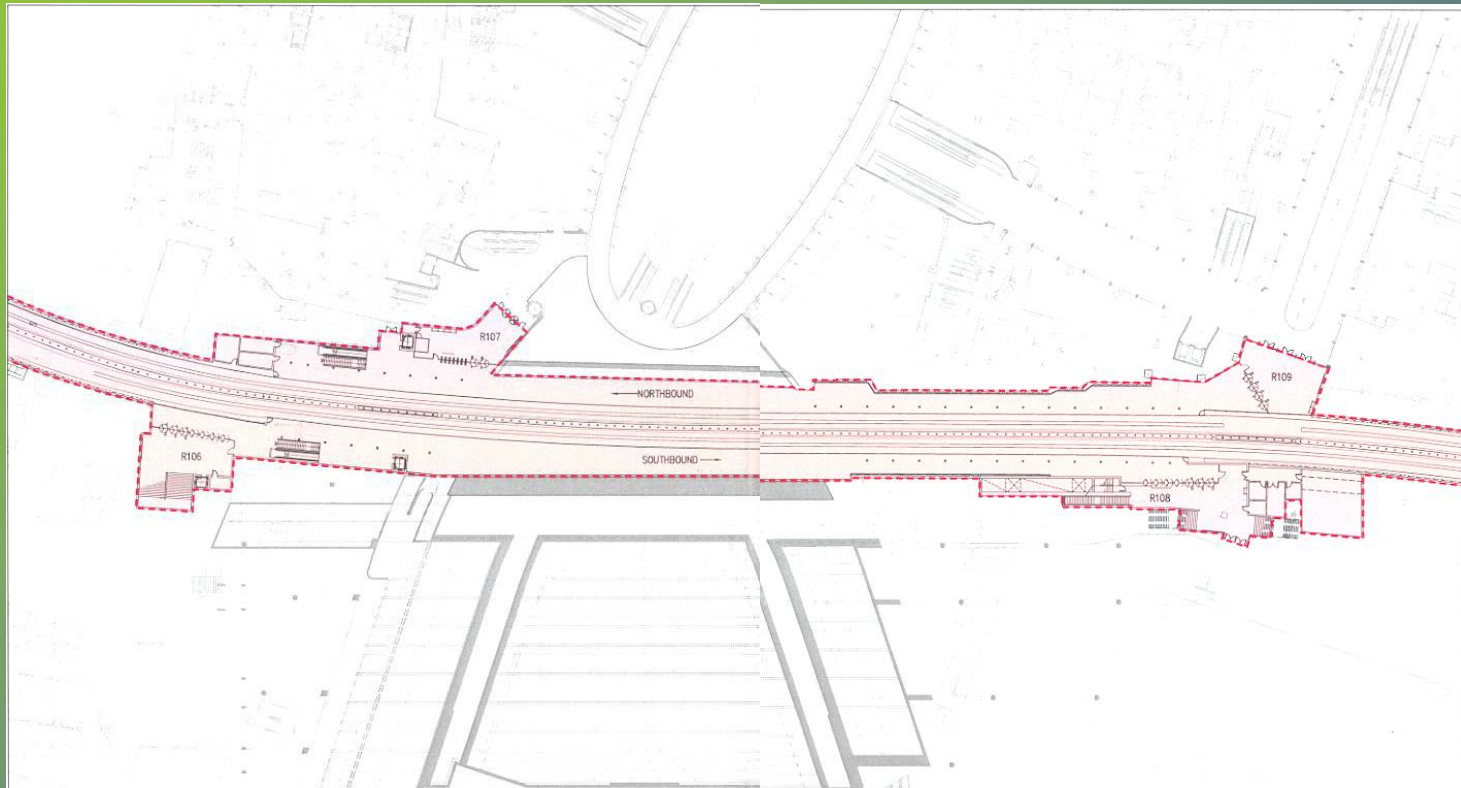
Cortlandt Street station **R** **W**

- Scheduled to re-open 4Q08
- Awaiting completion of WTC site development to restore service



Cortlandt Street-WTC station ①

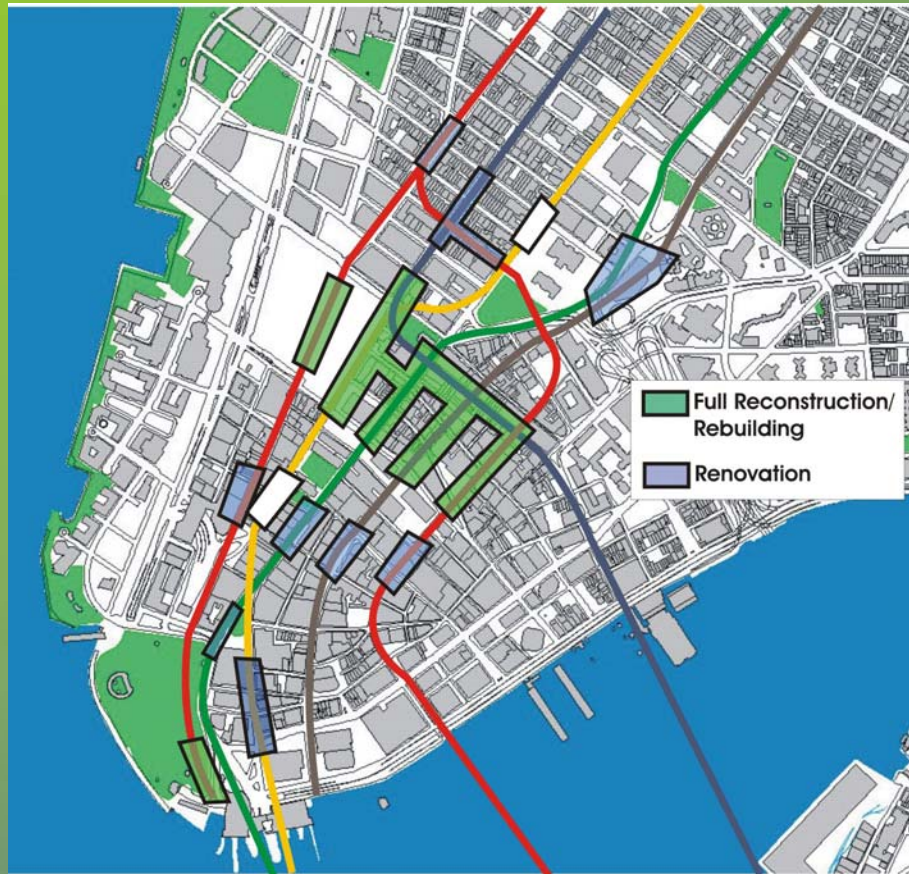
- Station shell included in post 9/11 reconstruction
- Integrated into PATH/WTC Downtown Concourse to WFC/BPC
- Awaiting completion of WTC site development to restore service



Other Lower Manhattan Stations

Station improvements to facilitate access through other Lower Manhattan gateways

- Construction proceeding on new South Ferry Terminal (completion by early 2009)
- Ongoing program of station renovation and improvements



Long Term Strategies

- Planned full-length Second Avenue Subway will provide 12 additional trains/hour from Midtown / Upper East Side and Harlem
- Design provision for further service extension into Brooklyn / Southern Queens
- If additional Downtown service needed, considering lengthening **C** trains.
- SAS core system and future extensions dependent on ongoing Capital Program funding

